



Bureau of Internal Affairs

2013 Year End Review

Garry F. McCarthy, Superintendent of Police

Juan J. Rivera, Chief
April 2014

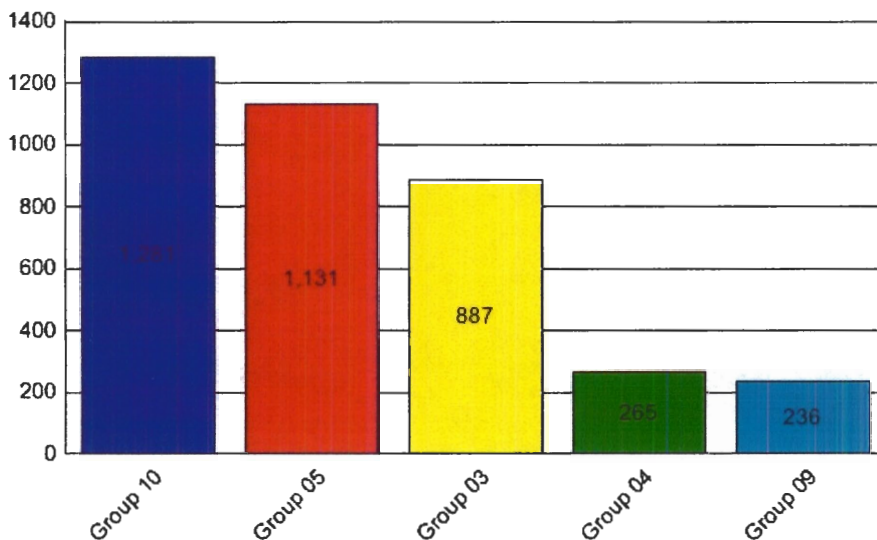
This newsletter contains a summary analysis of Complaint Logs received by the Chicago Police Department in 2013.

The Bureau of Internal Affairs has the responsibility to investigate those allegations involving complaints of employee misconduct not specific to the investigation by the Independent Police Review Authority. These allegations include but are not limited to; criminal misconduct, operational violations, substance abuse, and off-duty incidents that warrant department oversight.

The following data reflects those cases that were investigated by the Bureau of Internal Affairs and does not include those cases that were Administratively Closed.

Top 5 Allegations in 2013 by Initial Category

Source Data: Auto CR



- 01 - Verbal Abuse
- 03 - Improper Search
- 04 - Arrest/Lockup Procedures
- 05 - Independent Police Review Authority
- 10 - Operations/Personnel Violations (On Duty)

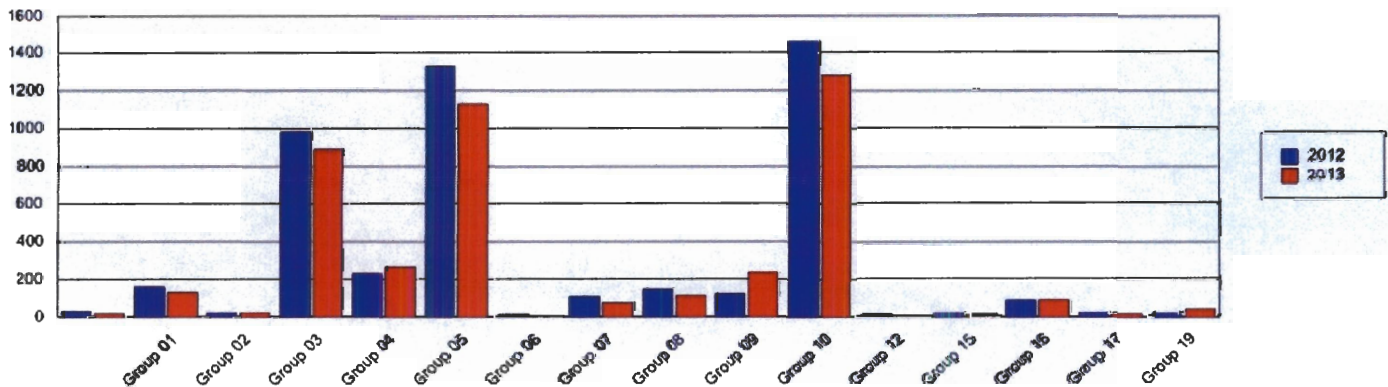
Complaint Logs Received by Initial Category

Source Data: Auto CR

Complaint Logs Received	2012 v. 2013	2012	2013	Percent +/-
Group 01	Verbal Abuse	153	127	-16.99%
Group 02	Alcohol Abuse	19	20	5.26%
Group 03	Search Related	982	887	-9.67%
Group 04	Arrest/Lockup	236	265	12.29%
Group 05	IPRA Investigations	1,326	1,131	-14.71%
Group 06	Bribery/ Official Corruption	11	7	-36.36%
Group 07	Traffic	110	74	-32.73%
Group 08	Criminal Misconduct	149	112	-24.83%
Group 09	Conduct Unbecoming	126	236	87.30%
Group 10	Operation/Personnel	1,462	1,281	-12.38%
Group 12	Supervisory Responsibility	12	6	-50.00%
Group 15	Drug/Substance Abuse	22	9	-59.09%
Group 16	Search Warrants	87	90	3.45%
Group 17	Medical Integrity	24	17	-29.17%
Group 19	Coercion	21	42	100.00%
Total		4,740	4,318	-8.90%

Complaint Logs by Year Initial Category

Source Data: Auto CR



2013 Police Board Separation Decisions

	BIA	IPRA	Total
Guilty, Discharged	5	6	11
Guilty, Suspended	4	10	14
Not Guilty	1	1	2
Charges Withdrawn*	1	0	1
Total	11	17	28

(*) Charges withdrawn due to the resignation or death of the respondent.
Above data includes original Police Board decisions only:

Police Board Review of Suspensions 2013	BIA	IPRA	TOTAL
Greater than 30 days			
Guilty, Recommended Penalty.....	1	0	1
Penalty Increased.....	0	0	0
Penalty Reduced.....	0	0	0
6 through 30 days			
Sustained, Full Penalty.....	3	3	6
Sustained, Penalty Reduced.....	1	0	1
Sustained, Penalty Reversed.....	0	0	0
Total.....	5	3	8

Top Three Civil Claims Filed Against Police

- 1. Civil Suits - Third Party**
- 2. Illegal Arrest/False Arrest**
- 3. Miscellaneous Traffic**

Source: Police Board Website Archives