



Bureau of Internal Affairs

2015 Year End Review

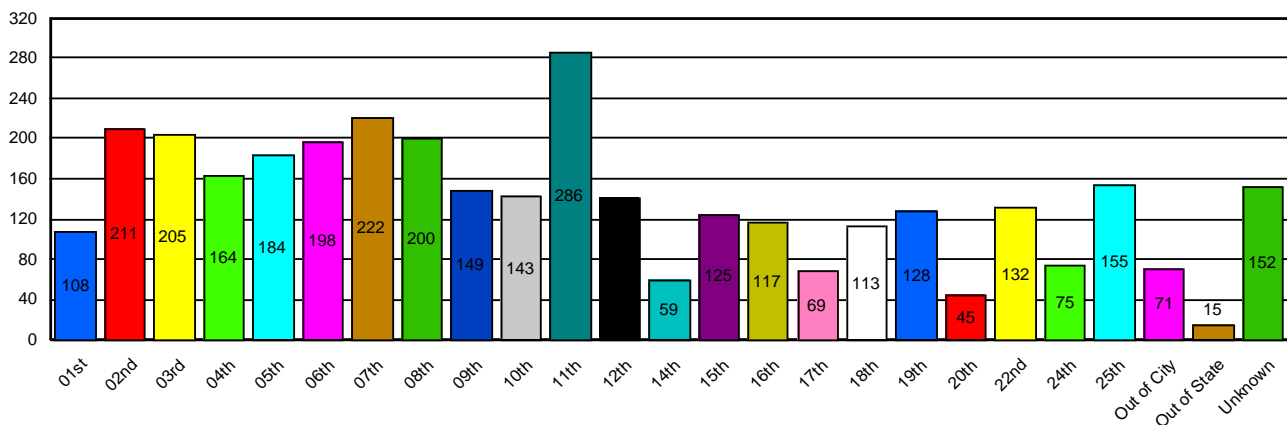
Garry McCarthy, Superintendent of Police

Eddie L. Welch III, Chief
March 2016

This newsletter contains a summary analysis of Complaint Logs received by the Chicago Police Department in 2015. This report is for internal information purposes only, and does not reflect official Independent Police Review Authority data.

Complaints Received by District of Occurrence - 2015

Source Data: Auto CR



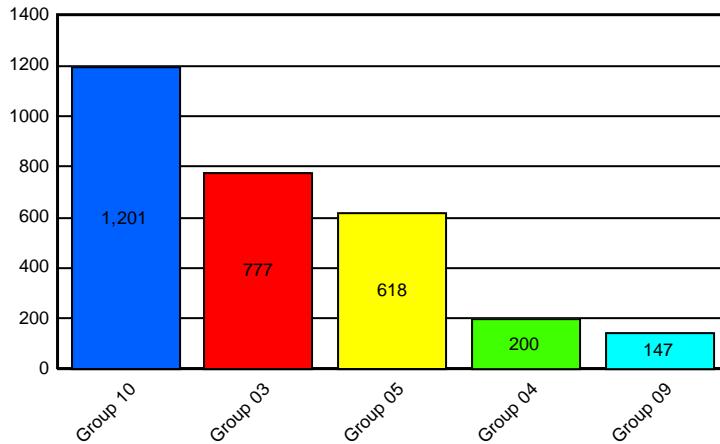
This chart represents location, not unit of complaint. The **Unknown (152)** are complaint logs filed without enough information to identify incident location. In 2015 3,378 unique complaints were logged, excluding Category 18: Firearm Discharges and Category 20: Notifications. The total of the distribution seen above is 3,467. That is because some complaints involved 2 or more locations.

In 2007, the Independent Police Review Authority was established as an independent agency with specific investigative responsibilities relating to domestic violence, excessive force, coercion and verbal abuse. Additionally, the Independent Police Review Authority conducts investigations into all cases in which a department member discharges a firearm or taser, even if no allegation of misconduct is made.

The Bureau of Internal Affairs has the responsibility to investigate those allegations involving complaints of employee misconduct not specific to the investigation by the Independent Police Review Authority. These allegations include but are not limited to; criminal misconduct, operational violations, substance abuse, and off-duty incidents that warrant department oversight.

Top 5 Allegations in 2015 by Initial Category

Source Data: Auto CR



Group 10: Ops/Personnel Violations (On Duty); Group 3: Improper Search; Group 09: Conduct Unbecoming (Off Duty); Group 04: Arrest/Lockup Procedures; Group 05: Independent Police Review Authority

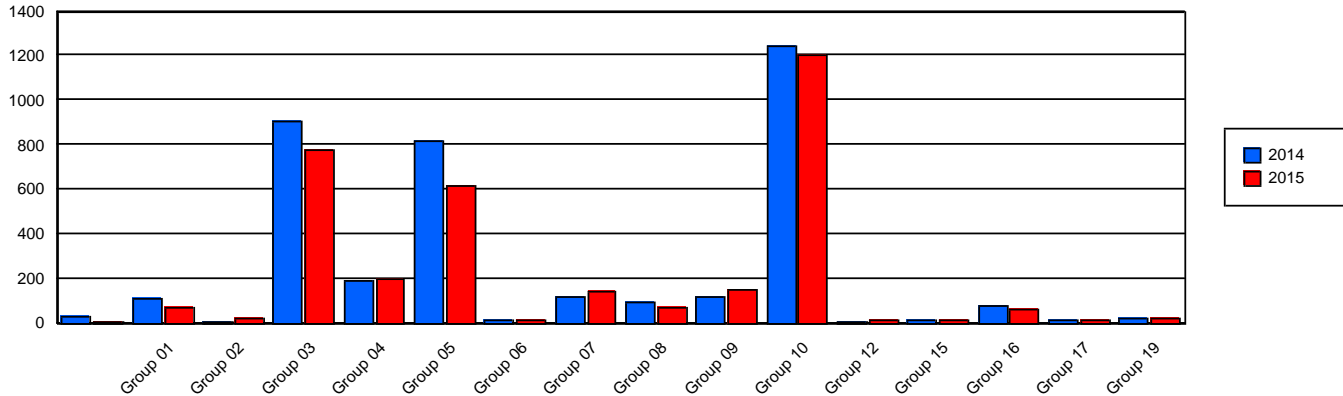
Complaint Logs Received by Initial Category

Source Data: Auto CR

Complaint Logs Received	2014 v. 2015	2014	2015	Percent +/-
Group 01	Verbal Abuse	113	73	-35%
Group 02	Alcohol Abuse	7	21	200%
Group 03	Search Related	902	777	-14%
Group 04	Arrest/Lockup	191	200	5%
Group 05	IPRA Investigations	818	618	-24%
Group 06	Bribery/ Official Corruption	10	10	
Group 07	Traffic	117	138	18%
Group 08	Criminal Misconduct	90	70	-22%
Group 09	Conduct Unbecoming	119	147	24%
Group 10	Operation/Personnel	1,242	1,201	-3%
Group 12	Supervisory Responsibility	8	15	87%
Group 15	Drug/Substance Abuse	10	10	
Group 16	Search Warrants	74	58	-22%
Group 17	Medical Integrity	14	13	-7%
Group 19	Coercion	24	24	
Total		3,739	3,375	-10%

Complaint Logs by Year Initial Category

Source Data: Auto CR



Top Three Civil Claims Filed

Against Police

- 1. Illegal Arrest/False Arrest**
- 2. Civil Suit - Third Party**
- 3. Search of Premise Without Warrant**