



Bureau of Internal Affairs

2011 Year End Review

Garry F. McCarthy, Superintendent of Police

Juan J. Rivera, Chief
March 2012

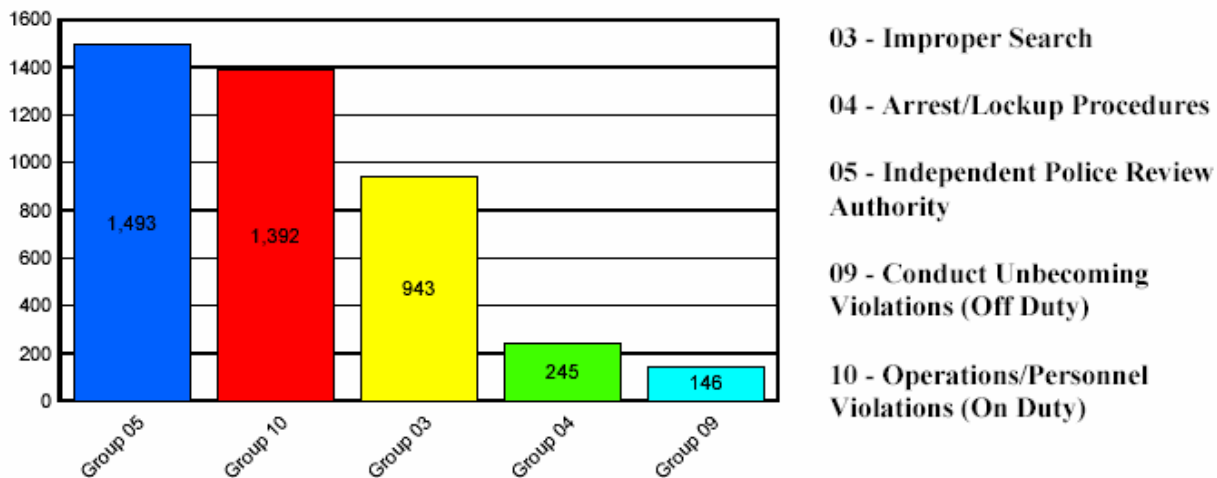
This newsletter contains a summary analysis of Complaint Logs received by the Chicago Police Department in 2011.

The Internal Affairs Division has the responsibility to investigate those allegations involving complaints of employee misconduct not specific to the investigation by the Independent Police Review Authority. These allegations include but are not limited to; criminal misconduct, operational violations, substance abuse, and off-duty incidents that warrant department oversight.

The following data reflects those cases that were investigated by the Internal Affairs Division and does not include those cases that were Administratively Closed.

Top 5 Allegations in 2011 by Initial Category

Source Data: Auto CR



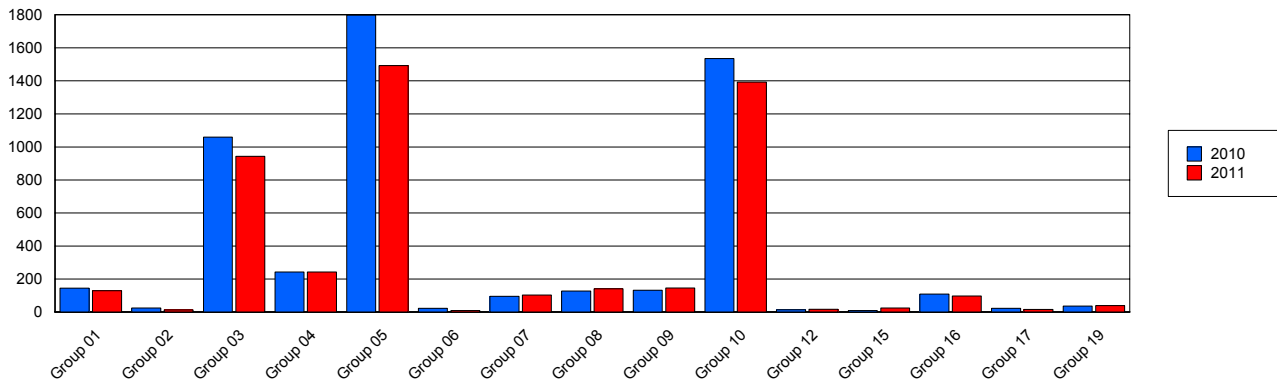
Complaint Logs Received by Initial Category

Source Data: Auto CR

Complaint Logs Received	2010 v. 2011	2010	2011	Percent +/-
Group 01	Verbal Abuse	145	129	-11.03%
Group 02	Alcohol Abuse	24	13	-45.83%
Group 03	Search Related	1,060	943	-11.04%
Group 04	Arrest/Lockup	243	245	0.82%
Group 05	IPRA Investigations	1,798	1,493	-16.96%
Group 06	Bribery/ Official Corruption	23	9	-60.87%
Group 07	Traffic	95	103	8.42%
Group 08	Criminal Misconduct	127	141	11.02%
Group 09	Conduct Unbecoming	132	146	10.61%
Group 10	Operation/Personnel	1,535	1,392	-9.31%
Group 12	Supervisory Responsibility	14	17	21.43%
Group 15	Drug/Substance Abuse	9	24	166.67%
Group 16	Search Warrants	109	97	-11.01%
Group 17	Medical Integrity	23	16	-30.43%
Group 19	Coercion	36	39	8.33%
Total		5,373	4,807	-10.53%

Complaint Logs by Year Initial Category

Source Data: Auto CR



2011 Police Board Separation Decisions

	IAD	IPRA	Total
Guilty, Discharged	7	1	8
Guilty, Suspended	2	0	2
Not Guilty	2	1	3
Charges Withdrawn*	4	0	4
Total	15	2	17

(*) Charges withdrawn due to the resignation or death of the respondent. Above data includes original Police Board decisions only:

Police Board

Review of Suspensions 2010	IAD	IPRA	TOTAL
Greater than 30 days			
Guilty, Recommended Penalty.....	0	0	0
Penalty Increased.....	0	0	0
Penalty Reduced.....	0	0	0
6 through 30 days			
Sustained, Full Penalty.....	6	2	8
Sustained, Penalty Reduced.....	0	0	0
Sustained, Penalty Reversed.....	0	0	0
Total.....	6	2	8

Top Three Civil Claims Filed Against Police

- 1. Illegal/False Arrest**
- 2. Civil Suits - Third Party**
- 3. Improper Search of Person**

Source: Police Board