



# Bureau of Internal Affairs

## 2012 Year End Review

Garry F. McCarthy, Superintendent of Police

Juan J. Rivera, Chief  
April 2013

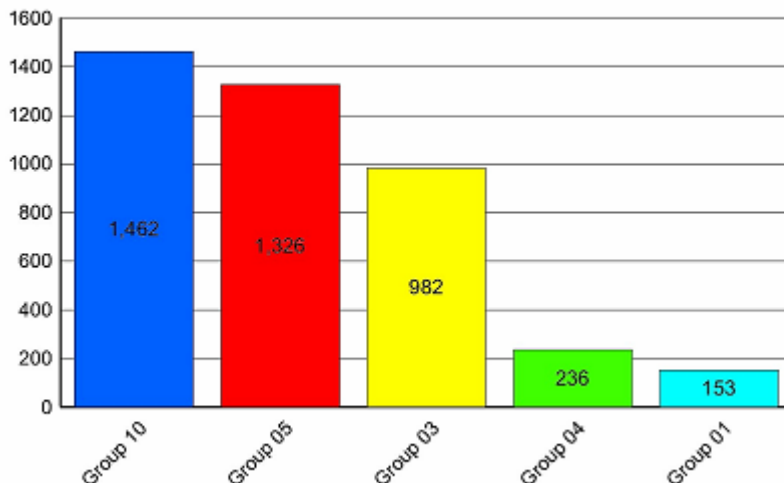
This newsletter contains a summary analysis of Complaint Logs received by the Chicago Police Department in 2012.

The Bureau of Internal Affairs has the responsibility to investigate those allegations involving complaints of employee misconduct not specific to the investigation by the Independent Police Review Authority. These allegations include but are not limited to; criminal misconduct, operational violations, substance abuse, and off-duty incidents that warrant department oversight.

The following data reflects those cases that were investigated by the Bureau of Internal Affairs and does not include those cases that were Administratively Closed.

### Top 5 Allegations in 2012 by Initial Category

Source Data: Auto CR



01 - Verbal Abuse

03 - Improper Search

04 - Arrest/Lockup Procedures

05 - Independent Police Review Authority

10 - Operations/Personnel Violations (On Duty)

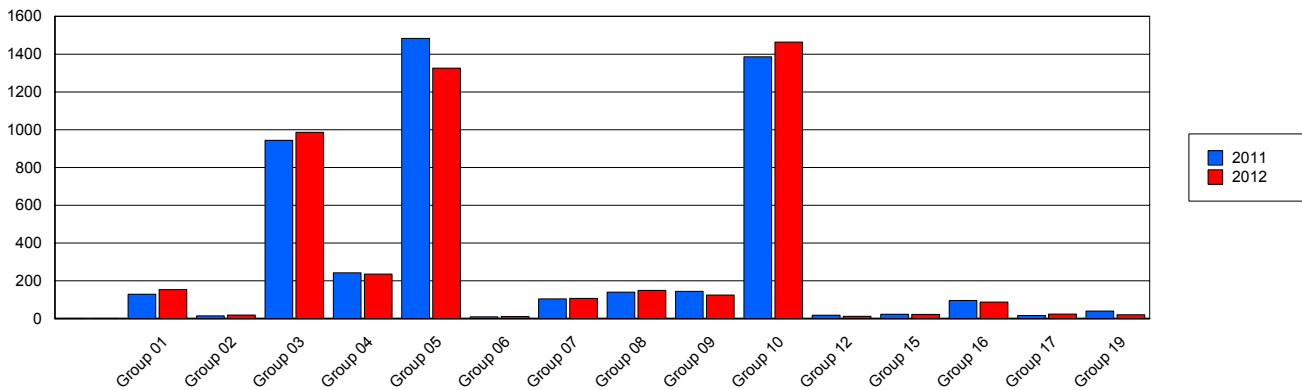
## Complaint Logs Received by Initial Category

Source Data: Auto CR

Complaint Logs Received	2011 v. 2012	2011	2012	Percent +/-
Group 01	Verbal Abuse	129	153	18.60%
Group 02	Alcohol Abuse	13	19	46.15%
Group 03	Search Related	943	982	4.14%
Group 04	Arrest/Lockup	245	236	-3.67%
Group 05	IPRA Investigations	1,493	1,326	-11.19%
Group 06	Bribery/ Official Corruption	9	11	22.22%
Group 07	Traffic	103	110	6.80%
Group 08	Criminal Misconduct	141	149	5.67%
Group 09	Conduct Unbecoming	146	126	-13.70%
Group 10	Operation/Personnel	1,392	1,462	5.03%
Group 12	Supervisory Responsibility	17	12	-29.41%
Group 15	Drug/Substance Abuse	24	22	-8.33%
Group 16	Search Warrants	97	87	-10.31%
Group 17	Medical Integrity	16	24	50.00%
Group 19	Coercion	39	21	-46.15%
<b>Total</b>		<b>4,807</b>	<b>4,740</b>	<b>-1.39%</b>

## Complaint Logs by Year Initial Category

Source Data: Auto CR



### 2012 Police Board Separation Decisions

	<u>BIA</u>	<u>IPRA</u>	<u>Total</u>
Guilty, Discharged	7	3	10
Guilty, Suspended	5	7	12
Not Guilty	5	6	11
Charges Withdrawn*	9	7	16
<b>Total</b>	<b>26</b>	<b>23</b>	<b>49</b>

(\*) Charges withdrawn due to the resignation or death of the respondent.  
Above data includes original Police Board decisions only:

<u>Police Board Review of Suspensions 2012</u>	<u>BIA</u>	<u>IPRA</u>	<u>TOTAL</u>
Greater than 30 days			
Guilty, Recommended Penalty.....	0	2	2
Penalty Increased.....	0	0	0
Penalty Reduced.....	4	0	4
6 through 30 days			
Sustained, Full Penalty.....	0	0	0
Sustained, Penalty Reduced.....	1	4	5
Sustained, Penalty Reversed.....	0	0	0
<b>Total.....</b>	<b>5</b>	<b>6</b>	<b>11</b>

### Top Three Civil Claims Filed Against Police

- 1. Civil Suits - Third Party**
- 2. Illegal Arrest/False Arrest**
- 3. Miscellaneous Traffic**

Source: Police Board Website Archives