



# Bureau of Internal Affairs 2014 Year End Review

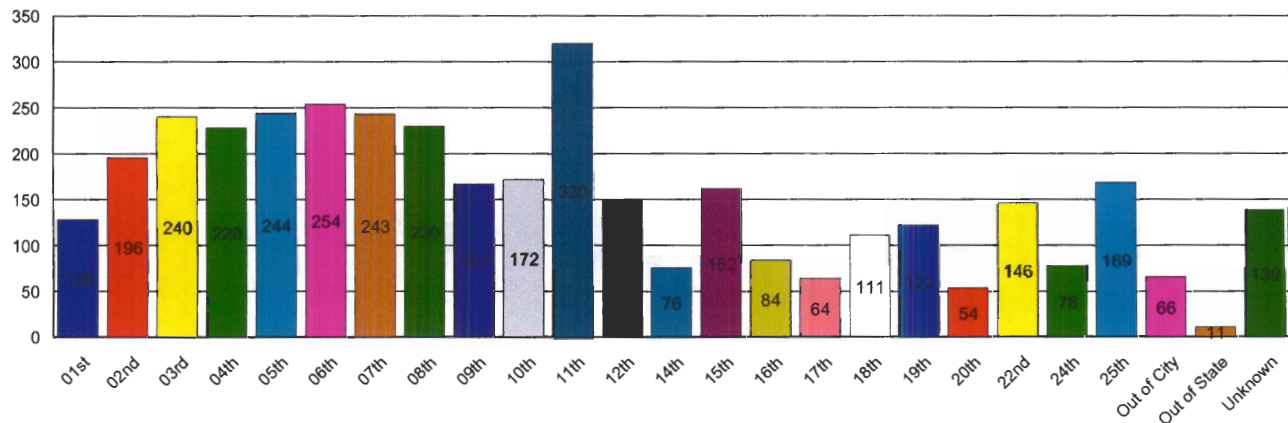
Garry F. McCarthy, Superintendent of Police

Juan J. Rivera, Chief  
February 2015

This newsletter contains a summary analysis of Complaint Logs received by the Chicago Police Department in 2014. This report is for internal information purposes only, and does not reflect official Independent Police Review Authority data.

## Complaints Received by District of Occurrence - 2014

Source Data: Auto CR



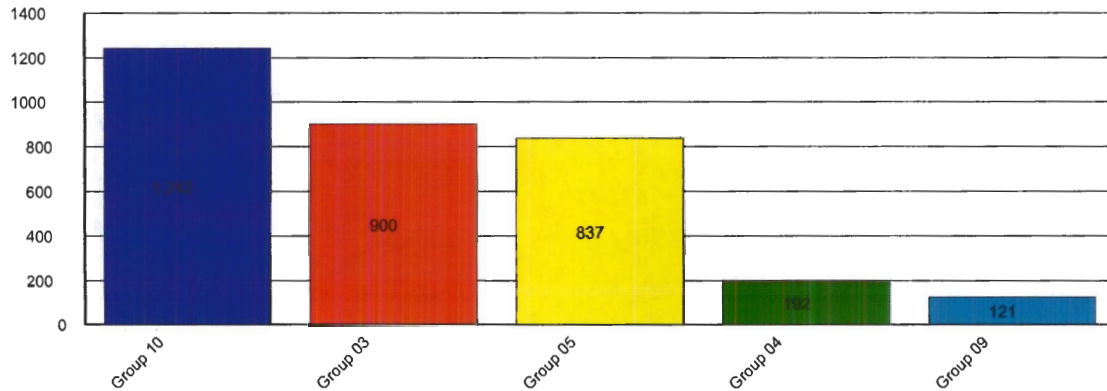
This chart represents location, not unit of complaint. The **Unknown (139)** are complaint logs filed without enough information to identify incident location. In 2014 3,769 unique complaints were logged, excluding Category 18: Firearm Discharges and Category 20: Notifications. The total of the distribution seen above is 3,853. That is because some complaints involved 2 or more locations.

In 2007, the Independent Police Review Authority was established as an independent agency with specific investigative responsibilities relating to domestic violence, excessive force, coercion and verbal abuse. Additionally, the Independent Police Review Authority conducts investigations into all cases in which a department member discharges a firearm or taser, even if no allegation of misconduct is made.

The Bureau of Internal Affairs has the responsibility to investigate those allegations involving complaints of employee misconduct not specific to the investigation by the Independent Police Review Authority. These allegations include but are not limited to; criminal misconduct, operational violations, substance abuse, and off-duty incidents that warrant department oversight.

### Top 5 Allegations in 2014 by Initial Category

Source Data: Auto CR



Group 10: Ops/Personnel Violations (On Duty); Group 3: Improper Search; Group 06: Bribery/Official Corruption; Group 04: Arrest/Lockup Procedures; Group 09: Conduct Unbecoming Violations (Off Duty)

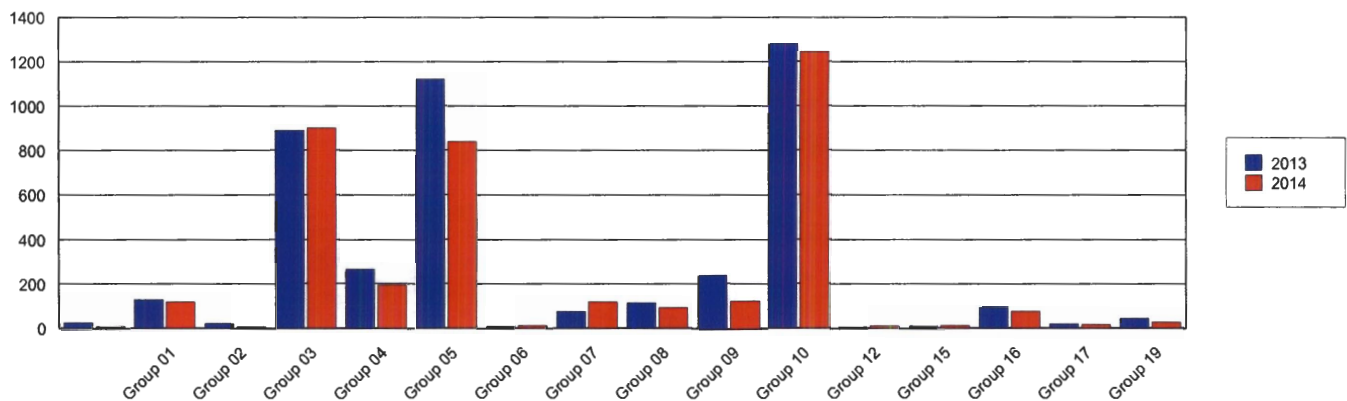
### Complaint Logs Received by Initial Category

Source Data: Auto CR

wComplaint Logs Received	2013 v. 2014	2013	2014	Percent +/-
Group 01	Verbal Abuse	127	116	-10%
Group 02	Alcohol Abuse	20	7	-65%
Group 03	Search Related	887	900	1%
Group 04	Arrest/Lockup	265	192	-28%
Group 05	IPRA Investigations	1,131	837	-25%
Group 06	Bribery/ Official Corruption	7	10	25%
Group 07	Traffic	74	116	58%
Group 08	Criminal Misconduct	112	90	-20%
Group 09	Conduct Unbecoming	236	121	-49%
Group 10	Operation/Personnel	1,281	1,242	-3%
Group 12	Supervisory Responsibility	6	9	33%
Group 15	Drug/Substance Abuse	9	10	11%
Group 16	Search Warrants	90	74	-18%
Group 17	Medical Integrity	17	15	-12%
Group 19	Coercion	42	24	-43%
<b>Total</b>		<b>4,318</b>	<b>3,769</b>	<b>-13%</b>

### Complaint Logs by Year Initial Category

Source Data: Auto CR



**2014 Police Board Separation Decisions**

(pending data from Police Board)

	<u>BIA</u>	<u>IPRA</u>	<u>Total</u>
Guilty, Discharged			
Guilty, Suspended			
Not Guilty			
Charges Withdrawn*			

Total

(\*) Charges withdrawn due to the resignation or death of the respondent. Above data includes original Police Board decisions only:

**Police Board**

**Review of Suspensions 2014**

(pending data from Police Board)

	<u>BIA</u>	<u>IPRA</u>	<u>TOTAL</u>
Greater than 30 days			
Guilty, Recommended Penalty.....			
Penalty Increased.....			
Penalty Reduced.....			
6 through 30 days			
Sustained, Full Penalty.....			
Sustained, Penalty Reduced.....			
Sustained, Penalty Reversed.....			
Total.....			

Source: Police Board Website Archives

**Top Three Civil Claims Filed  
Against Police**

- 1. Civil Suits - Third Party**
- 2. Illegal Arrest/False Arrest**
- 3. Miscellaneous Traffic**