



Bureau of Internal Affairs

2016 Year End Review

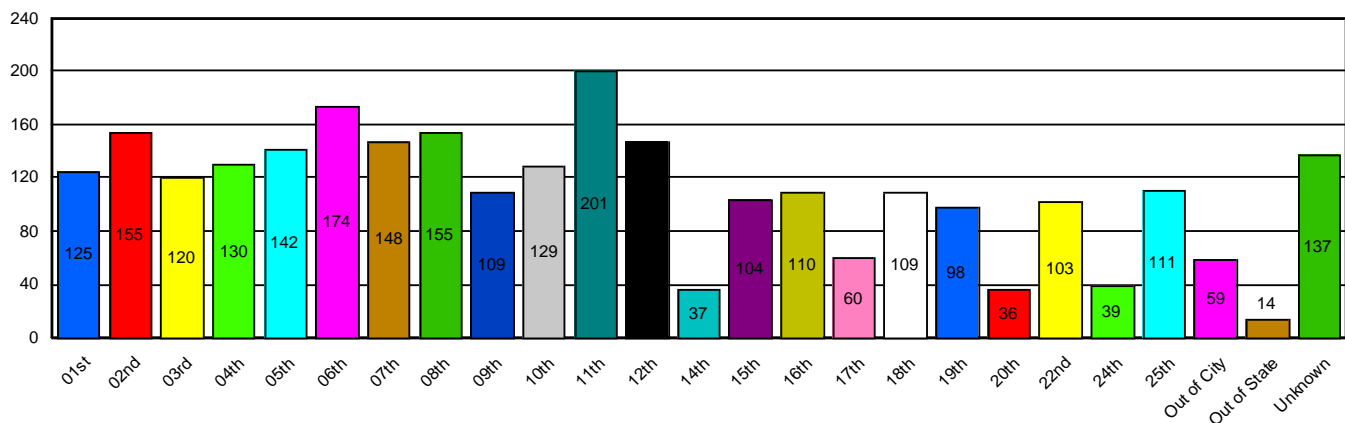
Eddie T. Johnson, Superintendent of Police

Eddie L. Welch III, Chief
March 2017

This newsletter contains a summary analysis of Complaint Logs received by the Chicago Police Department in 2016. This report is for internal information purposes only, and does not reflect official Independent Police Review Authority data.

Complaints Received by District of Occurrence - 2016

Source Data: Auto CR



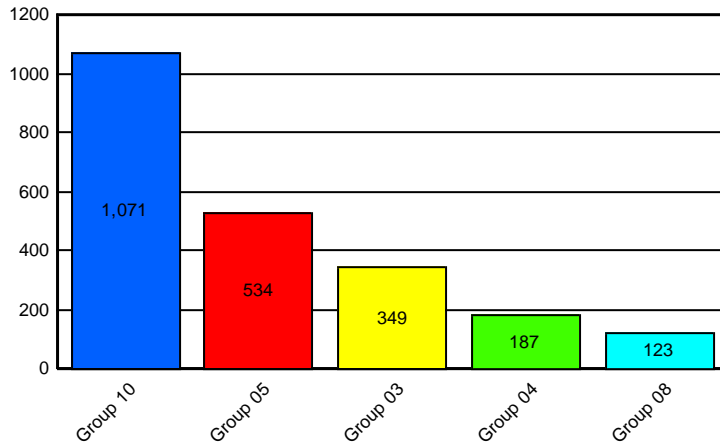
This chart represents location, not unit of complaint. The **Unknown (137)** are complaint logs filed without enough information to identify incident location. In 2016 2,680 unique complaints were logged, excluding Category 18: Firearm Discharges and Category 20: Notifications. The total of the distribution seen above is 2,753. That is because some complaints involved 2 or more locations.

In 2007, the Independent Police Review Authority was established as an independent agency with specific investigative responsibilities relating to domestic violence, excessive force, coercion and verbal abuse. Additionally, the Independent Police Review Authority conducts investigations into all cases in which a department member discharges a firearm or taser, even if no allegation of misconduct is made.

The Bureau of Internal Affairs has the responsibility to investigate those allegations involving complaints of employee misconduct not specific to the investigation by the Independent Police Review Authority. These allegations include but are not limited to; criminal misconduct, operational violations, substance abuse, and off-duty incidents that warrant department oversight.

Top 5 Allegations in 2016 by Initial Category

Source Data: Auto CR



Group 10: Ops/Personnel Violations (On Duty); Group 3: Improper Search; Group 06: Bribery/Official Corruption; Group 04: Arrest/Lockup Procedures; Group 05: Independent Police Review Authority

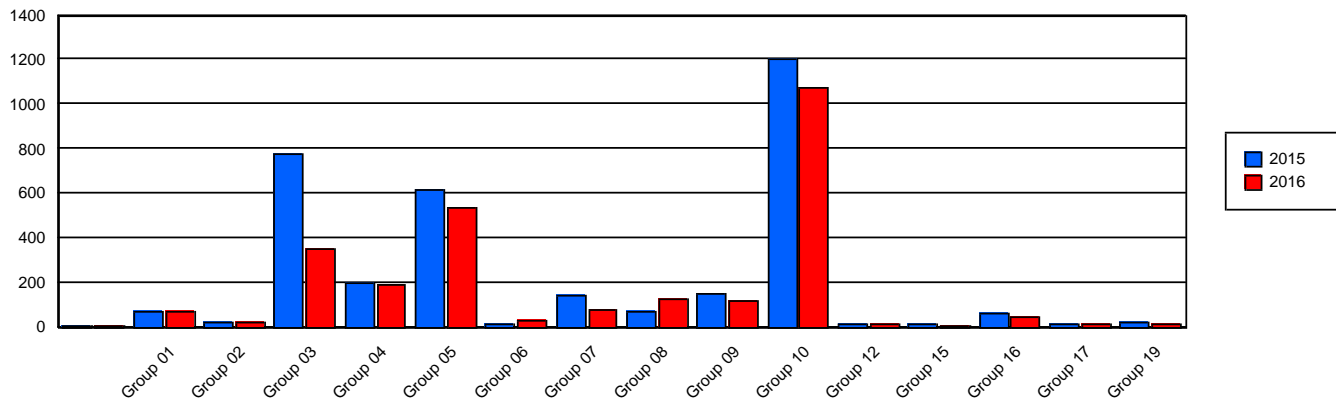
Complaint Logs Received by Initial Category

Source Data: Auto CR

Complaint Logs Received	2015 v. 2016	2015	2016	Percent +/-
Group 01	Verbal Abuse	73	72	-1%
Group 02	Alcohol Abuse	21	20	-5%
Group 03	Search Related	777	349	-55%
Group 04	Arrest/Lockup	200	187	-6%
Group 05	IPRA Investigations	618	534	-14%
Group 06	Bribery/ Official Corruption	10	30	200%
Group 07	Traffic	138	81	-41%
Group 08	Criminal Misconduct	70	123	76%
Group 09	Conduct Unbecoming	147	114	-22%
Group 10	Operation/Personnel	1,201	1,071	-11%
Group 12	Supervisory Responsibility	15	13	-13%
Group 15	Drug/Substance Abuse	10	6	-40%
Group 16	Search Warrants	58	48	-17%
Group 17	Medical Integrity	13	13	
Group 19	Coercion	24	14	-42%
Total		3,378	2,680	-21%

Complaint Logs by Year Initial Category

Source Data: Auto CR



Top Three Civil Claims Filed

Against Police

- 1. Illegal Arrest/False Arrest**
- 2. Civil Suit - Third Party**
- 3. Search of Premise Without Warrant**